



# MARTINS ESTATES

SALES AND LETTINGS

69 High Street  
Ashford  
Kent  
TN24 8SF

**Tel:** 01233 610 444



**66 Springwood Drive, Ashford, Kent TN23 3LJ**

**£850 PCM**

AVAILABLE NOW and ready to move in. A one-bedroom cluster home is situated within Godinton Park, close to the Town Centre and International Passenger Station.

The property comprises a lounge/diner, a fitted kitchen, one double bedroom, and a bathroom.

Externally, the property offers allocated parking and a small front garden.

No pets and No smokers.

**\* AVAILABLE WITH DEPOSIT-FREE OPTION \***

"This property is available with a Deposit-Free option, which means that instead of paying a traditional 5-week security deposit, you pay a fee of one week's rent + VAT to become a member of Flatfair (a deposit-free renting scheme), which significantly reduces the upfront costs. This fee is non-refundable and is not a deposit so it cannot be used towards covering the cost of any future damage. More details available at [flatfair.co.uk](http://flatfair.co.uk)"

## 66 Springwood Drive, Ashford, Kent TN23 3LJ

### Porch

Door to:

### Lounge

11'9" x 11'10" (3.57m x 3.60m)

Box window to front, stairs.

### Kitchen

11'9" x 5'10" (3.57m x 1.77m)

Window to front, open plan.

### Bedroom

8'7" x 10'2" (2.62m x 3.11m)

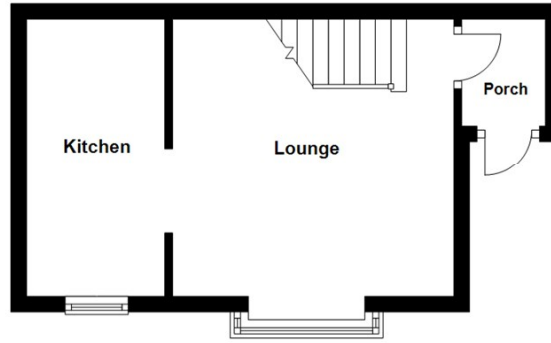
Window to front, door to:

### Bathroom

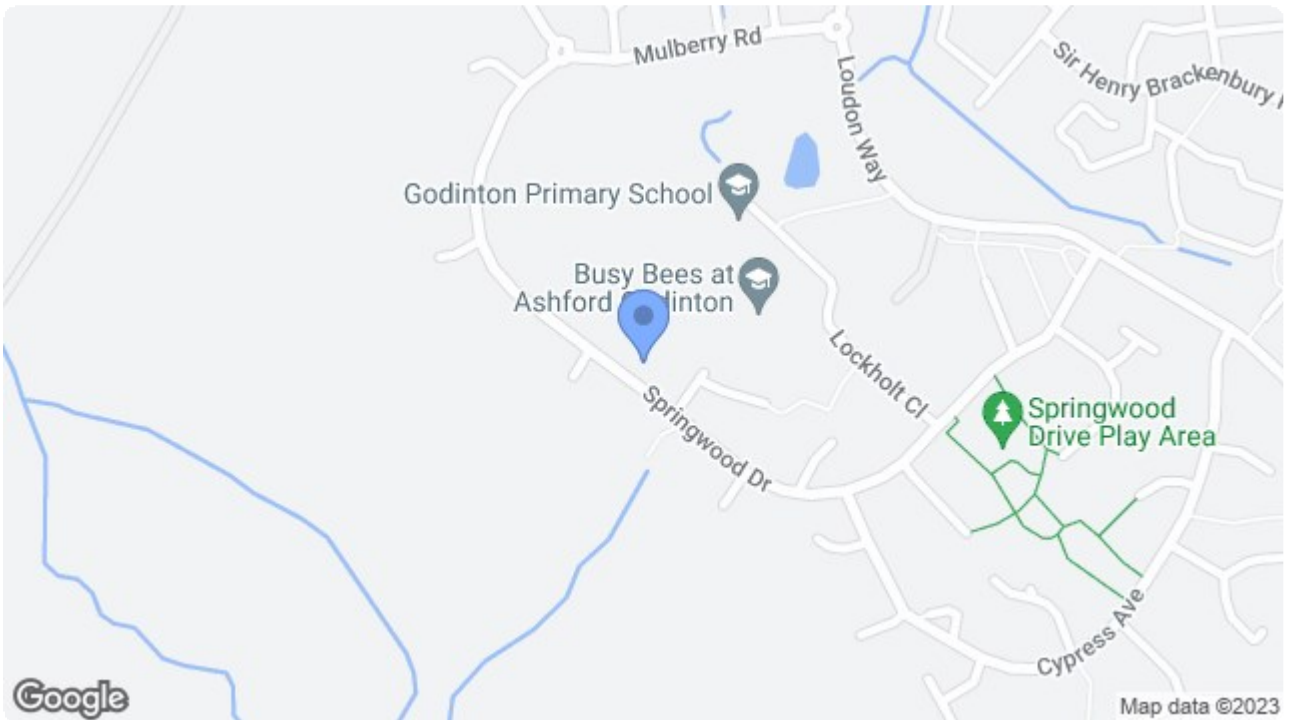
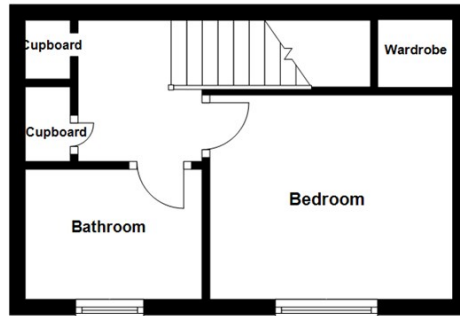
Window to front, door to:

### Wardrobe

## Ground Floor



## First Floor



Energy Efficiency Rating		Current	Potential
Very energy efficient - lower running costs			
(92 plus) A			91
(81-91) B			
(69-80) C			
(55-68) D			
(39-54) E		54	
(21-38) F			
(1-20) G			
Not energy efficient - higher running costs			
England & Wales		EU Directive 2002/91/EC	

Environmental Impact (CO <sub>2</sub> ) Rating		Current	Potential
Very environmentally friendly - lower CO <sub>2</sub> emissions			
(92 plus) A			72
(81-91) B			
(69-80) C			
(55-68) D			
(39-54) E		51	
(21-38) F			
(1-20) G			
Not environmentally friendly - higher CO <sub>2</sub> emissions			
England & Wales		EU Directive 2002/91/EC	

**69 HIGH STREET, ASHFORD, KENT TN24 8SF**

Tel: 01233 610444

[www.martinsestates.co.uk](http://www.martinsestates.co.uk)

email: [sales@martinsestates.co.uk](mailto:sales@martinsestates.co.uk)